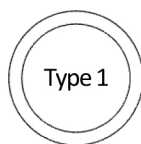


Post Selection Check Sheet

Domestic Product Line

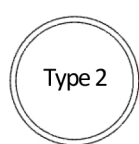
For assistance contact Customer Service at 863-816-3402 or websales@safetyzonespecialists.com

Post Type:



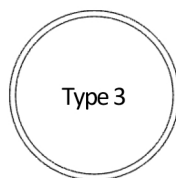
Type 1

2" MP FlexPost

☐


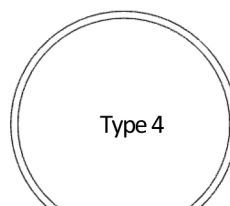
Type 2

2" OmegaPost

☐


Type 3

3" Tuff Post®

☐


Type 4

4" Tuff Post®

☐

Post Color:

- ☐ White ^{T1, T2, T3, T4}
☐ Yellow ^{T1, T2, T3, T4}
☐ Orange ^{T1, T3}
☐ Gray ^{T1}
☐ Black ^{T1}
☐ Red ^{T1}
☐ Green ^{T1}

Post Top:

Open Top ^{T1, T2, T3, T4}
☐
Black Cap ^{T1, T3, T4}
☐
Short Squeeze ^{T1, T3, T4}
☐
Long Squeeze ^{T1, T2, T3, T4}
☐

Height:

- ☐ 28" ^{T1, T2, T3, T4}
☐ 36" ^{T1, T2, T3, T4}
☐ 42" ^{T1, T2, T3, T4}
☐ 48" ^{T1, T3, T4}

Sheeting Color:

- ☐ White
☐ Yellow
☐ Orange
☐ Green
☐ Red
☐ Blue

Sheeting Grade:

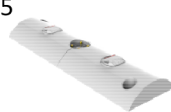
- ☐ Type IV High Intensity ^{T1, T3, T4}
☐ Type V Super High Intensity ^{T2}
☐ Diamond Grade ^{T1, T3, T4}

Sheeting Quantity:

- ☐ One (std. long squeeze)
☐ Two (std. tubular)
☐ Other: _____

Base/Curb:

5



Tuff Curb®

☐

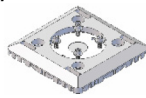
6



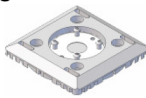
Tuff Curb® XLP™

☐

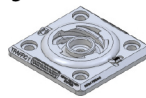
7

Surface Mount
Fixed Base
☐

8

Surface Mount
Quick Release
☐

9

Quarter Turn
OmegaPost
☐


Drivable

☐
Recessed,
Snow-Plowable
☐

Base Color:

- ☐ White ⁵⁻⁹
☐ Yellow ⁵⁻⁹
☐ Black ⁷⁻⁹
☐ Green ⁶
☐ Purple ⁶
☐ Other: _____

Installation Materials:

- ☐ Multi-Purpose Sleeve Anchors
☐ Concrete Screw Anchors
☐ Two-Part Epoxy
☐ Super Bundy® Pads ⁶⁻⁸

Notes:

IMPACT recovery
SYSTEMS™

Safety Zone Specialists
2318 Old Combee Rd, Unit 107
Lakeland, FL 33805
863-816-3402 Phone 863-816-3437 Fax
www.safetyzonespecialists.com
websales@safetyzonespecialists.com

SAFETY ZONE
SPECIALISTS